

CERTIFIED LAND CORNER RECORDATION

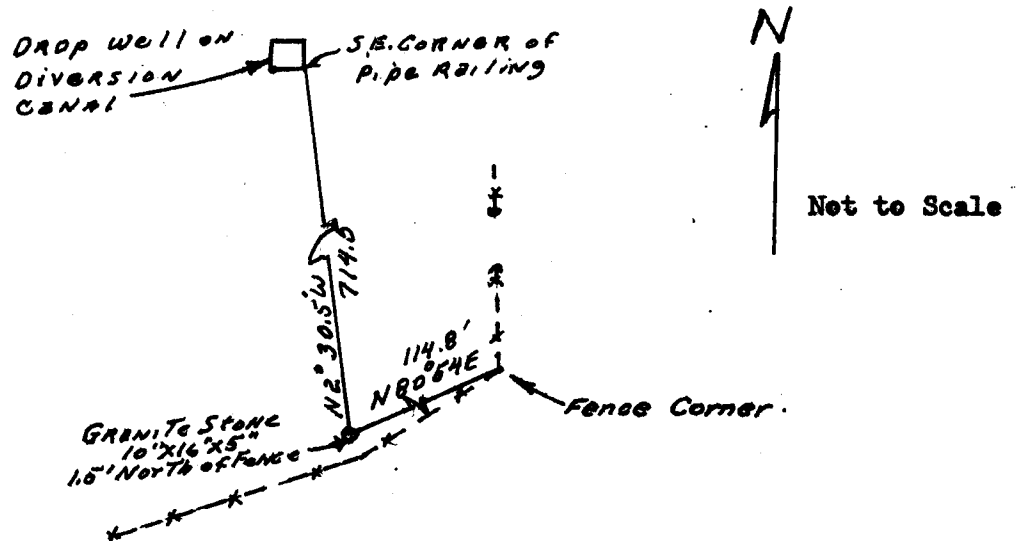
DESCRIPTION OF CORNER EVIDENCE FOUND, AND ORIGINAL RECORD (if known)

| | |
|---|--|
| <p>LOCATION <u>S. 34 S. 35</u> S. 3 S. 2 T. 16 N., R. 66 W. T. 15 N., R. 66 W. 6th P. M.</p> | <p>Found grey granite stone 10" x 16" x 5"-broken top. Two marks on east, otherwise planted and in good condition. GLO record-granite boulder 14" x 12" x 3".</p> |
|---|--|

DESCRIPTION OF MONUMENT AND ACCESSORIES ESTABLISHED TO PERPETUATE THE ORIGINAL LOCATION OF THIS CORNER:

Basis of bearing by solar observation.

SKETCH, WITH COURSE AND DISTANCE TO ADJACENT CORNER IF DETERMINED IN THIS SURVEY. (May Sketch or Paste Reproduction on Reverse Side.)



I, Robert H. Whitney certify that I have carefully performed or ~~examined~~ the work done on the diagrammed corner as reported on this recordation form and approve the same.

Robert H. Whitney Wyoming P. E. 364
 Signature of Surveyor County Engineer Registration No.

STATE OF WYOMING,
 Office of Clerk and Recorder,
 County of Taramie

This "corner record" was filed for record on the 14 day of December, 1973, was noted on the cross-index plat and is assigned page No. _____, in book No. _____.

John B. Husman
 County Official

| | | | |
|-----------------------------|--------------|--------------|---------------|
| Cross Index No. <u>2 17</u> | T. <u>16</u> | R. <u>66</u> | Mer. <u>6</u> |
| <u>A 17</u> | T. <u>15</u> | R. <u>66</u> | Mer. <u>6</u> |
| _____ | T. _____ | R. _____ | Mer. _____ |
| _____ | T. _____ | R. _____ | Mer. _____ |
| _____ | T. _____ | R. _____ | Mer. _____ |
| _____ | T. _____ | R. _____ | Mer. _____ |
| _____ | T. _____ | R. _____ | Mer. _____ |

Photographed

Indexed

Spliced

Assessor

The State of Wyoming }
County of Laramie } SS

This instrument was filed for record

at 9:50 o'clock P.M. on the 14 day of December

A. D. 1973 and duly recorded in

Book on page

County Clerk & Ex-Officio Register of Deeds

By Deputy

The State of Wyoming }
County of Laramie } SS

This instrument was filed for record

at o'clock M. on the

day of

A. D. 19 and duly recorded in

Book of page

John B. Williams

County Clerk & Ex-Officio Register of Deeds

By Deputy

Handwritten notes and scribbles at the bottom of the page.